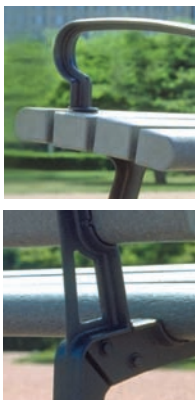


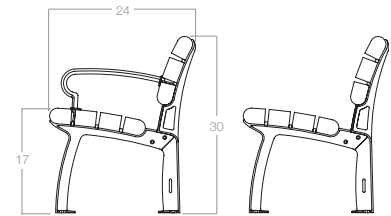
From parks and plazas to sidewalks and promenades, City reflects both the lightness and the solidity of the urban landscape. Iron casting forms, derived from the glass and steel structures of the city, create profiles that are stout yet stately. City blends the qualities of products designed for people in an urban context.





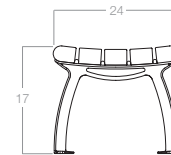
City Seat

- Available with or without arms
- Arms independent of support structures
- Surface mount only
- Discontinuous seat and back surfaces
- Proportioned for sitting comfort
- Bull nose edge slats protect users
- 60", 72" and 96" standard lengths



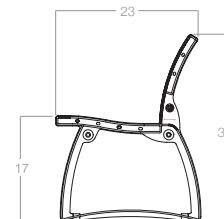
City Bench *New! (Available 2009)*

- Continuous seat surface
- Proportioned height for sitting comfort
- Waterfall edges to protect users
- Surface mount only
- 60" and 96" standard lengths
- Custom lengths available
- Available with sleep stoppers



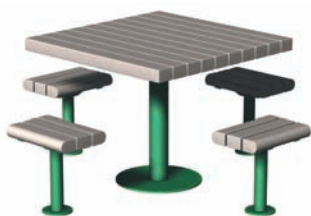
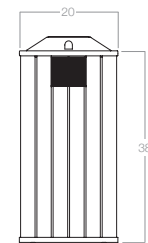
Plaza Bench

- Surface mount or freestanding
- Seat and back use same HDPE profiles
- Cast aluminum end frames
- 60" standard length
- Custom sizes available
- Can connect as tandem unit



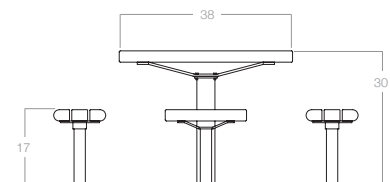
Recycling Bin *New!*

- 33 gallon size with 2 side fill openings
- Cast cover with keylock
- 33 gallon plastic liner required
- Surface mount, casters or glides
- Top unloading only
- Recycling clusters available



Plaza Table *New!*

- Surface or embedded mount
- Table top slats are 2.5x3.5 HDPE profiles
- Seats use 2.5x3.5 bullnose profile
- Bullnose seat edges protect users
- Steel structural components
- Custom sizes available
- ADA version available (3 seats only)



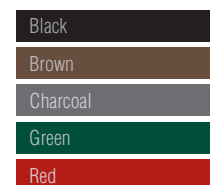
RecycleDesign™ is a registered trademark for site amenities manufactured and marketed worldwide. TRIMAX™ HDPE is a proprietary branded compound used exclusively for the extruded planks used in RecycleDesign™ products.

TRIMAX™ Planks are made of recycled, high density polyethylene lumber. The product is composed of 100% recycled HDPE, derived from purified milk bottle waste, combined with UV-inhibited pigment systems as well as other process additives. TRIMAX™ HDPE lumber is made from a single, purified polymer and is manufactured to consistent, reproducible standards.

TRIMAX™ HDPE is very resistant to moisture and is warranted not to rot, splinter, crack or peel. Waterproofing or staining is neither required nor recommended.

Powdercoat product finishing systems used with RecycleDesign™ products are 100% solids and contain no volatile organic compounds. The Powdercoat resin system is polyester, a weatherable and durable material suited for exterior use.

Powder Colors



TRIMAX™ Colors



Printed colors will vary from actual materials. Color samples are available upon request.